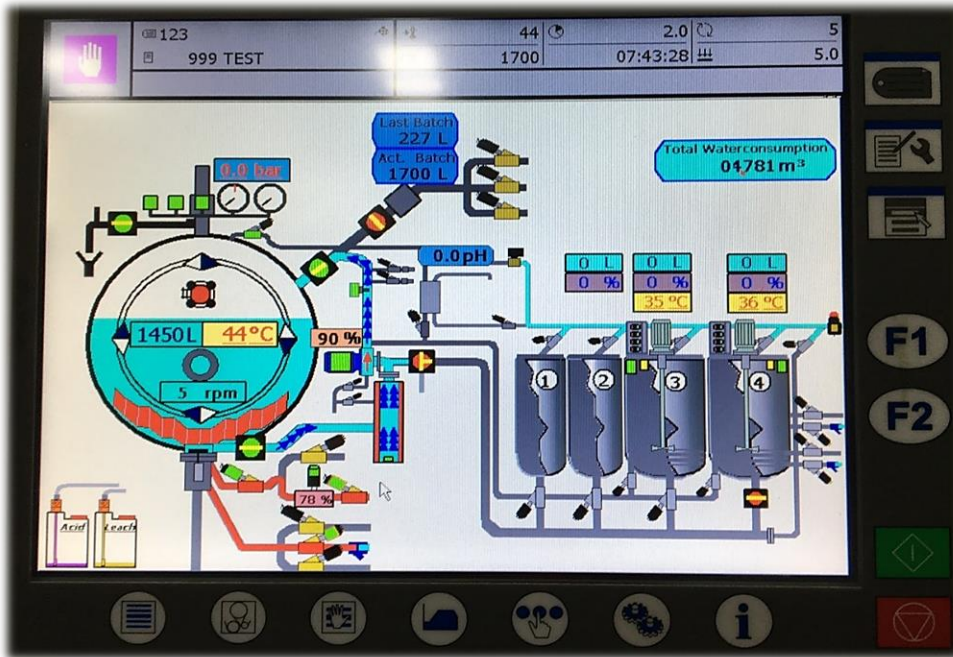
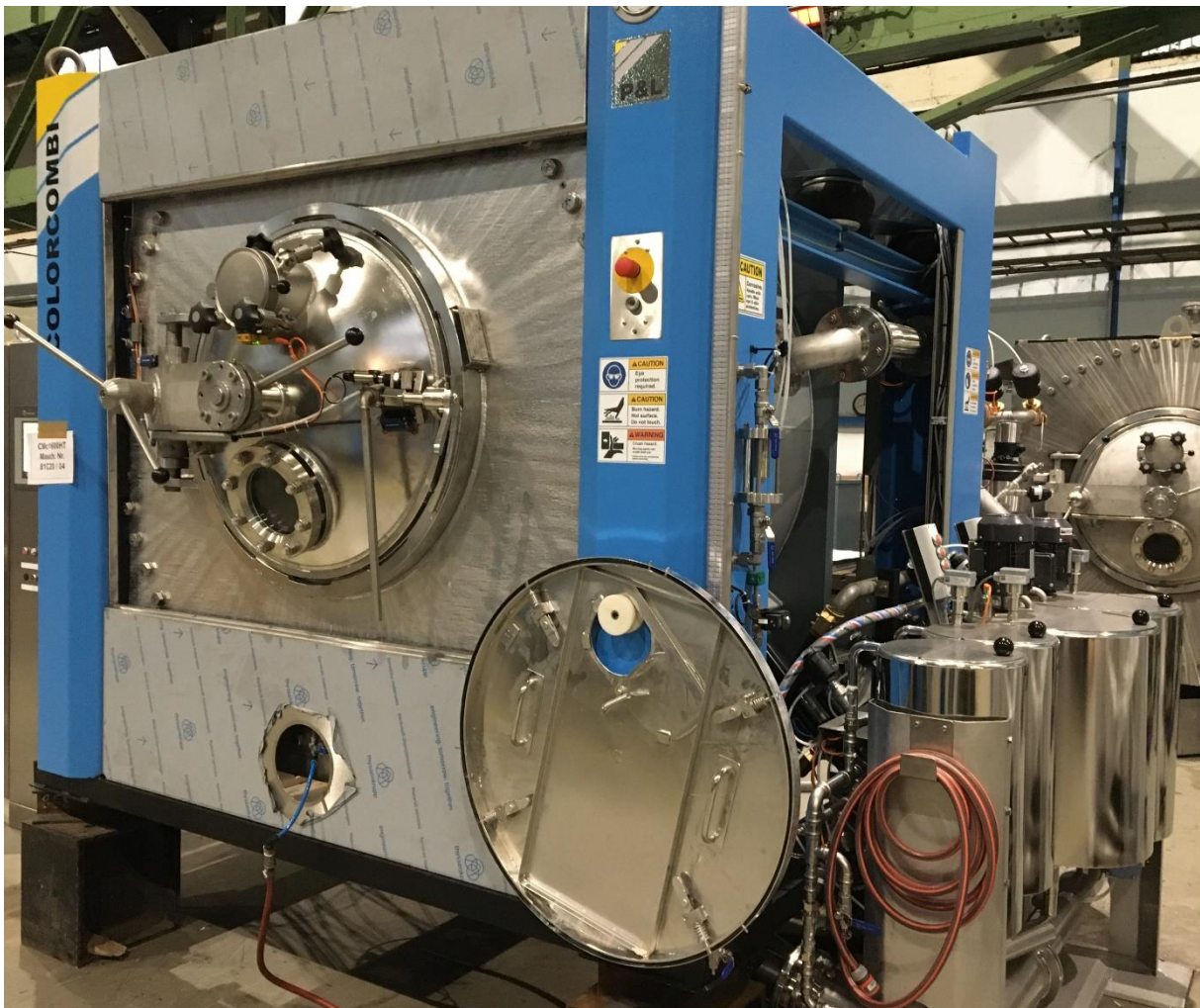


## Control Device Sedomat



## High-Temperature Machine CMC 1600 H.T. with Multi-Function Dosing System



## Options

### 1. Multi-Function Dosing System

As an alternative to the floor-level standard dosing system, a multiple dosing system adapted to the customer-specific dyeing process is available. It consists of 4 tanks, the volume of the separate tanks is adapted to the machine size. Each tank can be equipped with an indirect heating device, a stirrer as well as a filling-level sensor. Such a tank can be filled with liquor from the machine in a level-controlled manner. The temperature inside the tank can be controlled via the control device up to max. 85 °C. Linear, progressive and degressive dyeing curves can be dosed within a time window of 10 to 120 minutes by means of the level control. Dosing salt is possible, too. The liquor level remains constant.



## 2. Fully Automatic pH Value Control Device

This control system is a fully automatic dosing of acid or leach for obtaining a requested pH value. The programming is very easy as this function has been completely integrated in the software of the machine computer. Thus, the observance and adaptation of the pH value in accordance with the dye process or the dye curve resp. are granted.

For the pH value measuring electrodes belonging to this device no warranty period is granted.



## 3. Automatic Salt Dosing System

The automatic salt dosing system allows the controlled addition of solved salt into the machine. A tank being arranged next to the machine is filled with salt. The salt is rinsed into the machine together with the liquor in controlled manner, i.e. in a programmable way. By this operation mode, the liquor level of the machine is kept constant.

The salt dosing system can only be charged with industrial salt.

## 4. Second Drain Valve

Two drain valves allow to separate liquor flows and drain them separately (f. ex. washing water and dyeing liquor).

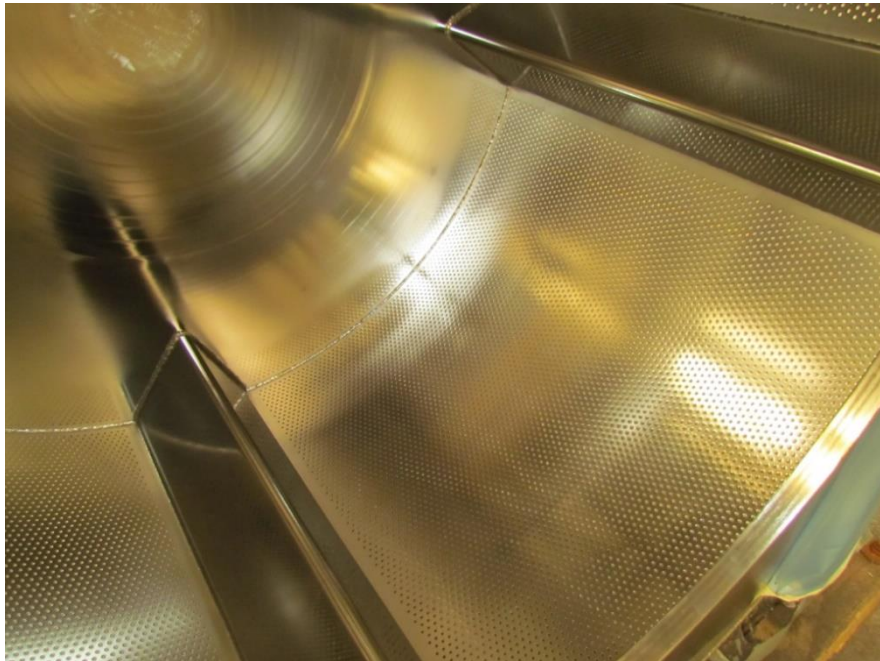
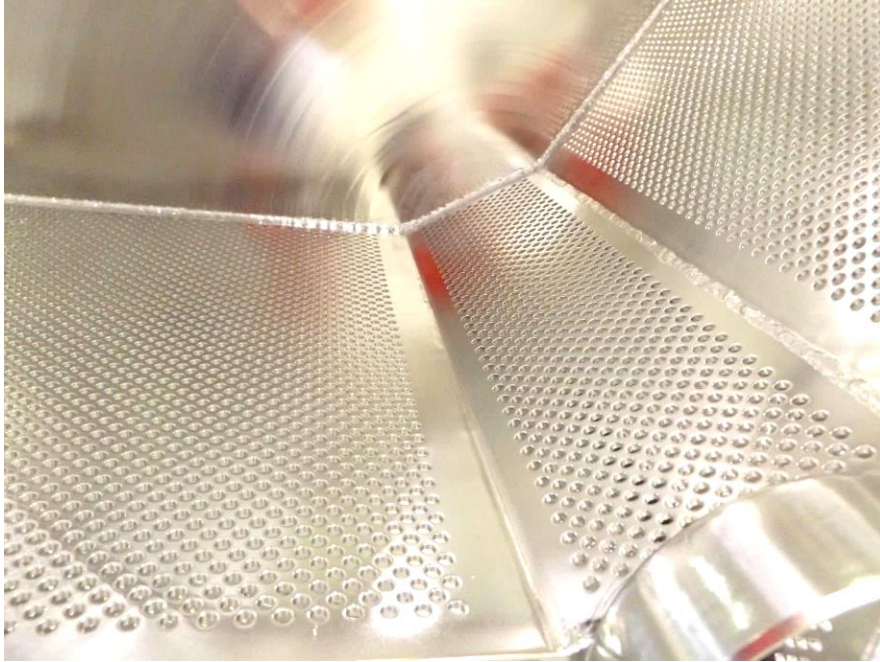
## 5. Stainless-Steel Bases

When using stainless-steel bases, concrete foundations are not necessary.

The stainless-steel bases are screwed to the base frame of the machine and dowelled to the hall floor.

## 6. Electrochemical Polishing of the Inner Drum

Electropolished surfaces are free of burrs and particles, metallurgically pure, shiny, smooth and closed at the microscopic level and have the optimum characteristics of the base material. Adhesion of chemical and dyestuff residues is considerably reduced. This treatment allows a particularly gentle dyeing process.



## 7. Drum

This drum is an open drum without compartments, however, with cams.



## 8. Heat Insulation

To increase the energy efficiency, we offer a 25 mm thick insulation of the outer drum. The complete jacketing consists of four single parts which are safely and firmly connected together by means of hook-and-loop fasteners.



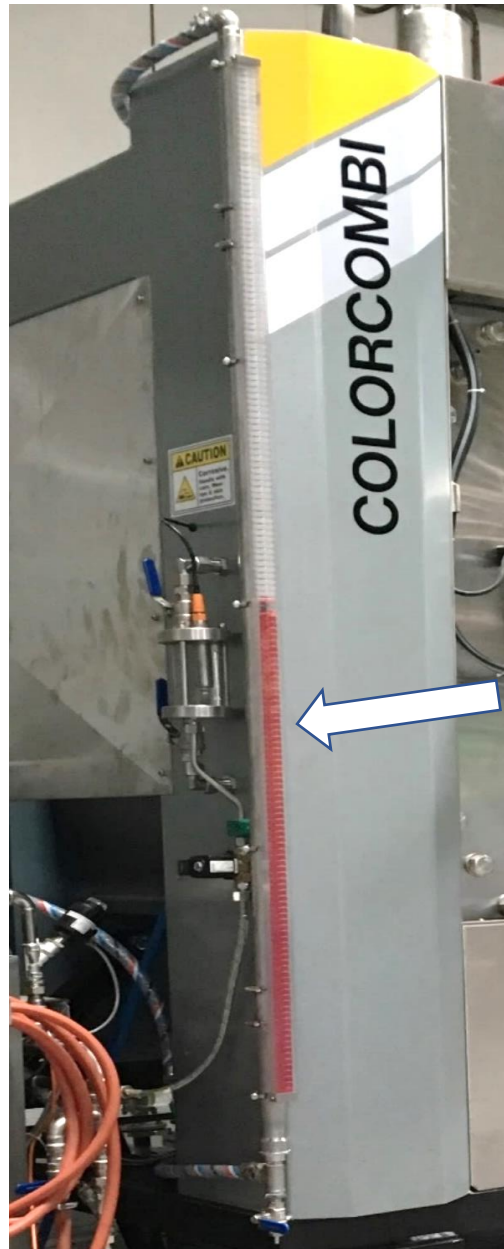
Outer drum without Insulation



Outer Drum with 25 mm Insulation

## 9. Füllstandsanzeige

Als Zusatz zur elektronischen Anzeige über die Steuerung bieten wir optional eine mechanische Anzeige zur genauen Erkennung der Füllhöhe



## 10. Water Counter

We offer optionally a water counter and the necessary software for recording the water consumption per dyeing process, added per 24-hour day and added for a complete month.

